

Debarkers

Primary Breakdown

Secondary Breakdown ◀

Lumber Handling

Planing Systems

Residual Processing

GUIDE RESURFACER

## Dual Head Saw Guide Resurfacer



USNR's Dual Head Saw Guide Resurfacer is a precision unit designed for accuracy, reliability and efficiency in saw guide resurfacing.

### Complete Solution

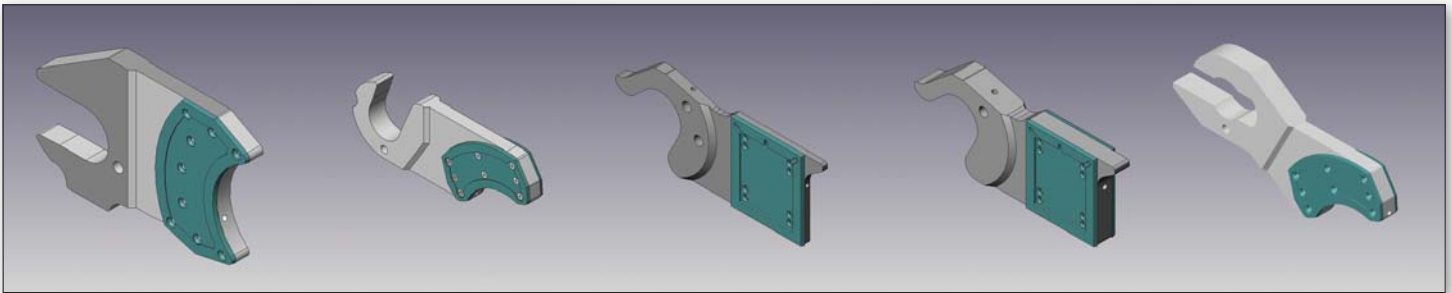
The USNR Dual Head Saw Guide Resurfacer is a complete stand alone solution.

- ▶ Designed to accurately machine both Babbitt pads of a center saw guide in a single pass
- ▶ Also able to machine the single Babbitt pad of end saw guides
- ▶ Efficient operation easily achieves the accuracy needed for thin kerf saw guides

### Experience

We've been designing and installing saw guides and kerf reduction technologies since 1934, and we've learned a lot about the fine points in the process. Now we've poured all that knowledge and experience into the development of a superior saw guide resurfacing unit.

# Dual Head Saw Guide Resurfer



Examples of a wide variety of saw guides that can be resurfaced with USNR's Dual Head Saw Guide Resurfer

## Performance

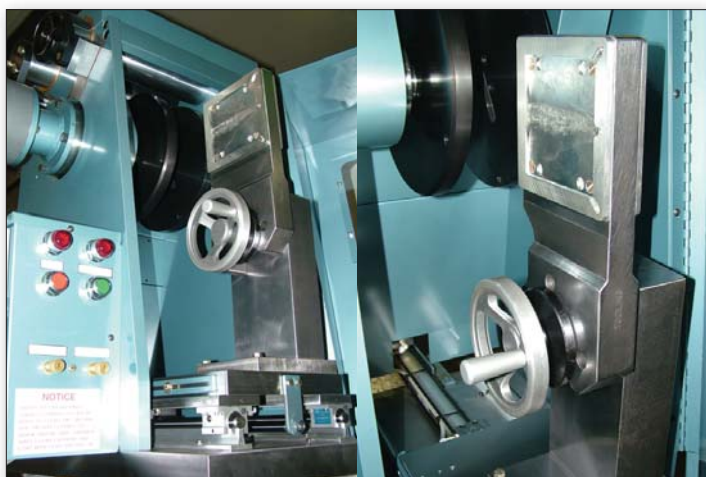
- ▶ This is a precision machine designed to maintain the critical accuracy required to guide thin kerf saws and cut lumber within close tolerances
- ▶ It's capable of machining double sided saw guide babbitt pads in one pass, for an efficient use of operator time

## Flexibility

- ▶ Can be used for single sided or double sided saw guides
- ▶ Can accurately resurface many types of saw guides

## Specifications

- ▶ Electrical cutter head drive motors - 120VAC-60Hz draw about 11 amps under each load
- ▶ Pneumatic air supplied by mill should be clean and dry at 2.5 scfm with 85 psi minimum supply pressure



Unit with Saw Guide in place

USNR RESURFACER



Millwide. Worldwide.

**USNR**