

Debarkers

Primary Breakdown

Secondary Breakdown

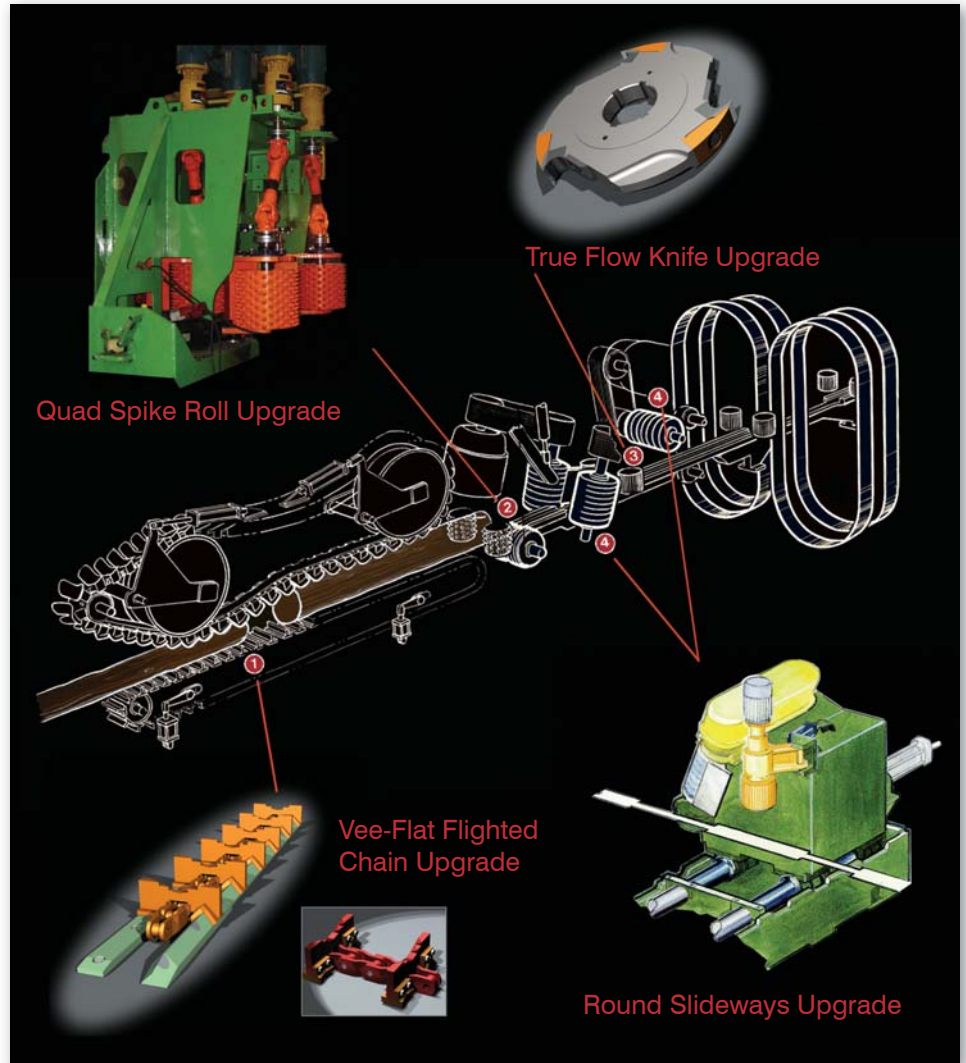
Lumber Handling

Planing Systems

Residual Processing

CONVERSIONS

C-N-S Conversions



Fast & Efficient

Back in the 1960's the Chip-N-Saw revolutionized the forest products industry. At USNR today, we're keeping history alive with upgrades and conversions that keep your C-N-S running faster and more efficiently than ever.

Conversions for Increased Production

USNR offers a number of C-N-S conversions including Quad Spike Rolls, True Flow Knives, Top and Side Head Round Slideways and Precision Vee-Flat Flighted Chain Upgrades.

C-N-S Conversions for Speed & Accuracy

Quad Spike Roll Upgrade

- ▶ Hydraulic linear positioners, complete with air cushion, provide extremely accurate positioning of the rolls for optimal control
- ▶ Reduces surging caused by overfeeding
- ▶ Drives are mounted up and out of the way to reduce the amount of moveable mass, which results in a faster, smoother operating machine
- ▶ Rolls are available in spiked or non-penetrating knurl

Precision Vee-Flat Flighted Chain Upgrade

- ▶ Provides the ultimate in straight-line tracking, even as system components wear
- ▶ Narrow profile chain allows for a wider scanning field of view
- ▶ Based on the high-strength steel alloy Max MRB-124 welded steel roller chain
- ▶ Guides are made from a light-weight, high-strength, corrosion and impact-resistant self-lubricating polymer compound for easy installation and long service life (see inset image on front)

True Flow Knife Upgrade

- ▶ Overfeed through the chipper is limited, starting at the knife clamp, resulting in smooth feeds
- ▶ Chrome-plated wear area extends the life of the knife holder
- ▶ All knives are heat-treated and ground to precision tolerances using only the finest chipper knife steel
- ▶ Interchangeable knife seats allow for quick and easy adjustment of chip thickness
- ▶ Easily accepts either babbitted or dual-edge babbittless replacement chipper knives (just change the knife clamps)
- ▶ Can be retrofitted to any Chip-N-Saw
- ▶ Available for conical or drum-style chip heads, custom designed for any application

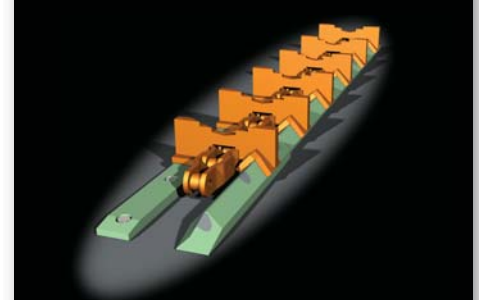
Top & Side-head Round-way Upgrade

- ▶ Roundways are made with high quality chromed and ground shafting and require no adjustments
- ▶ Very low maintenance
- ▶ Specialized slide bushings have exceptional wear quality
- ▶ Maintains greater accuracy even as system components wear
- ▶ Auto-lubrication included

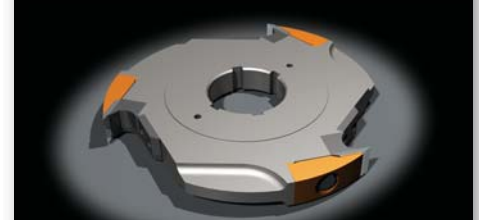
C-N-S CONVERSIONS



Quad Spike Rolls



Precision Vee-Flat Flighted Chain



True Flow System for Drum Style Chipper



Top and Side-head Round-ways

Millwide. Worldwide.

USNR